

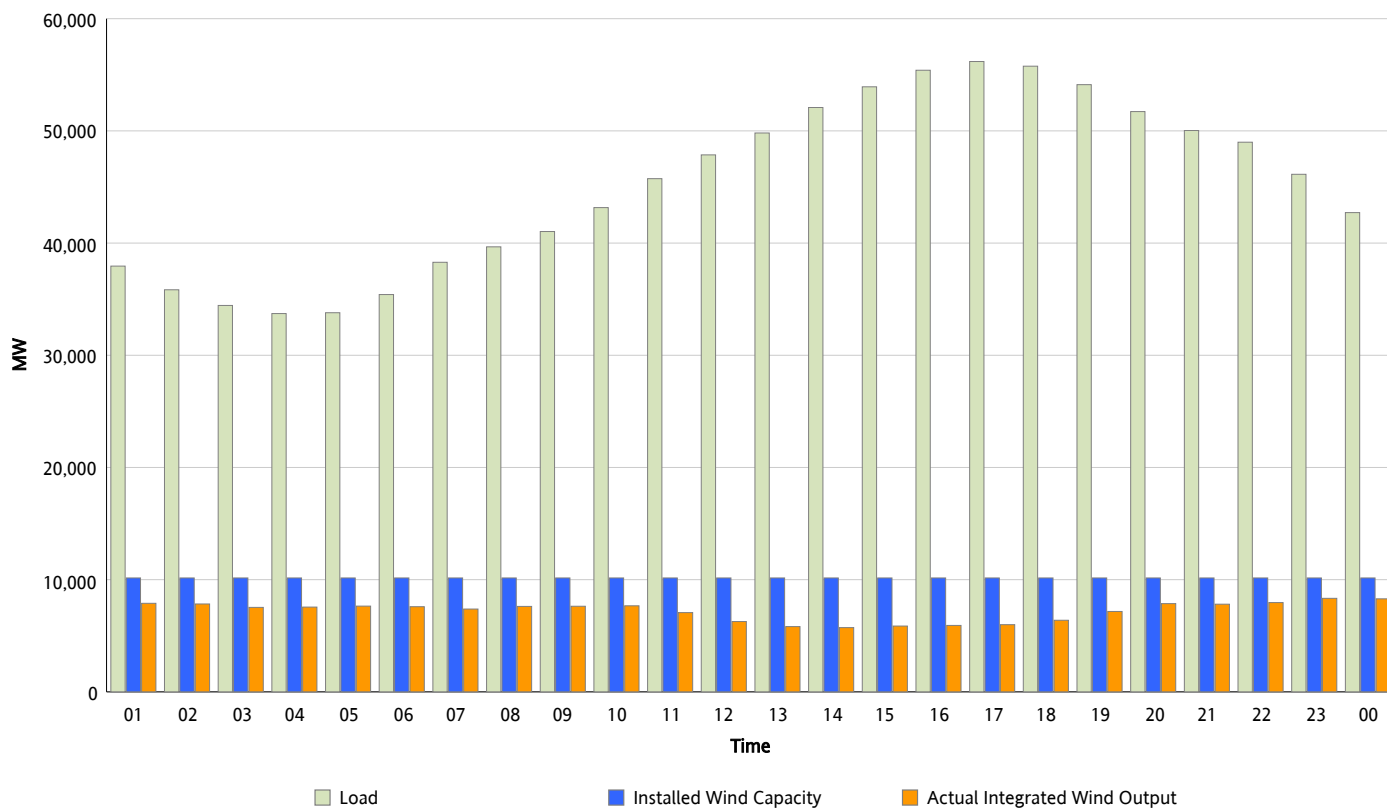


ERCOT Grid Operations

Wind Integration Report : 05/31/2013

| | |
|----------------------|-----------|
| Peak Load | 56,184 MW |
| Load Peak Hour (HE) | 17 |
| Wind Over Peak | 5,990 MW |
| Wind Record 05/02/13 | 9,674 MW |
| Max Wind Value* | 8,452 MW |
| Wind Peak Time | 22:56 |
| Wind Integration % | 18.92 % |

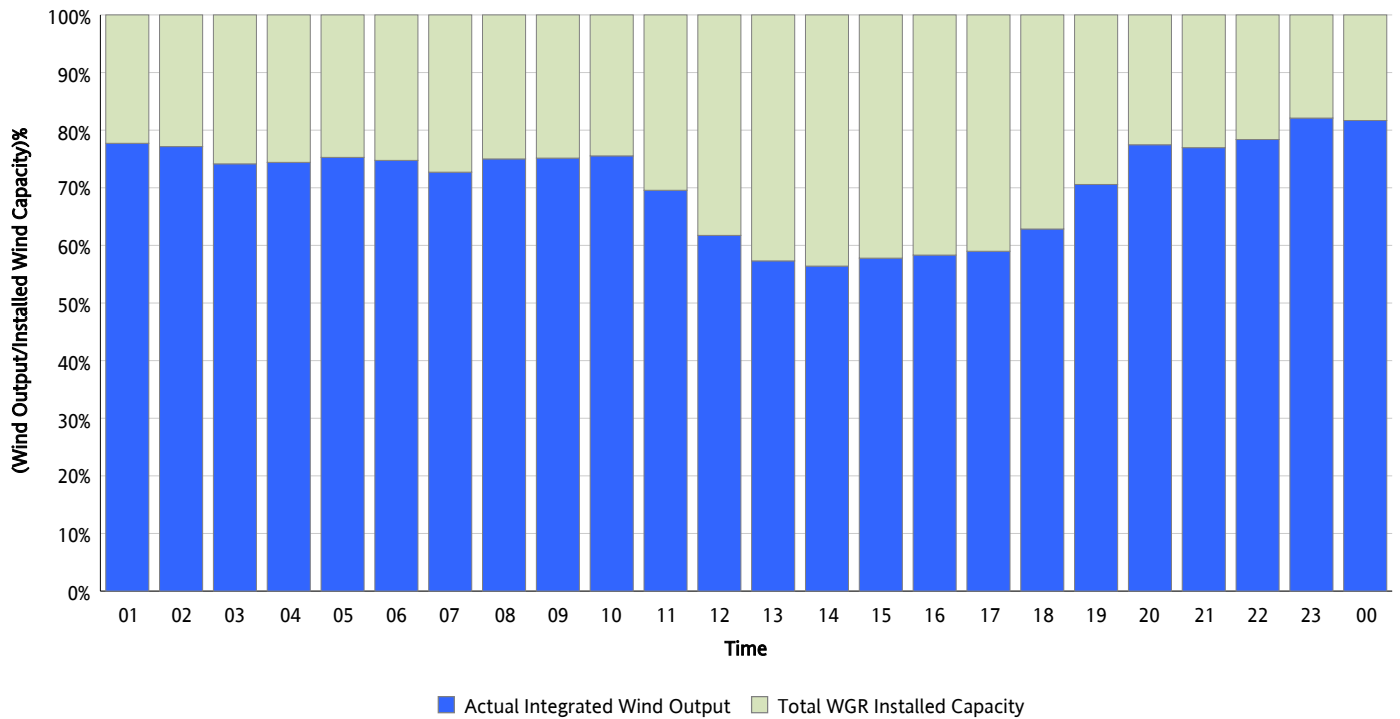
Hourly Average Actual Load vs. Actual Wind Output
05/31/2013



* Wind Record and Wind Max represent instantaneous values and the rest of the values are integrated over the hour

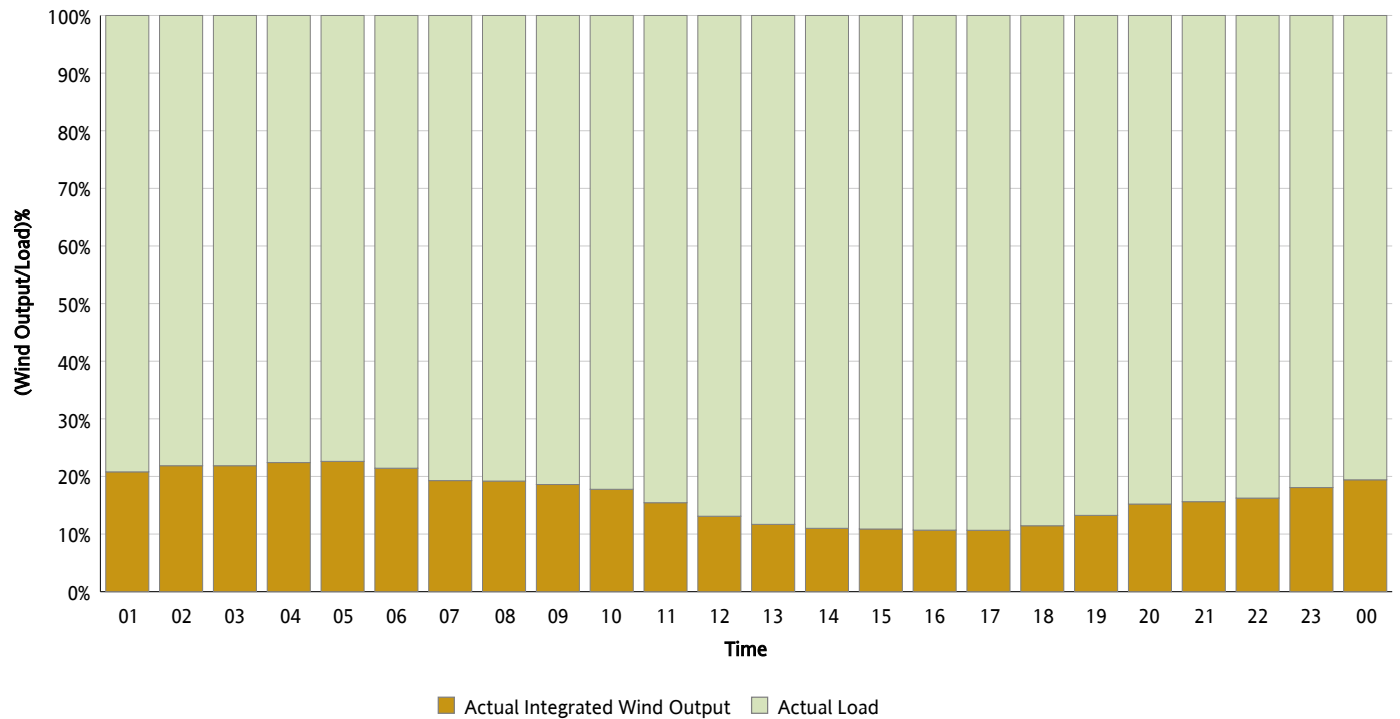
Actual Wind Output as a Percentage of the Total Installed Wind Capacity

05/31/2013



Actual Wind Output as a Percentage of the ERCOT Load

05/31/2013



ERCOT Load vs. Actual Wind Output

05/24/2013 - 05/31/2013

